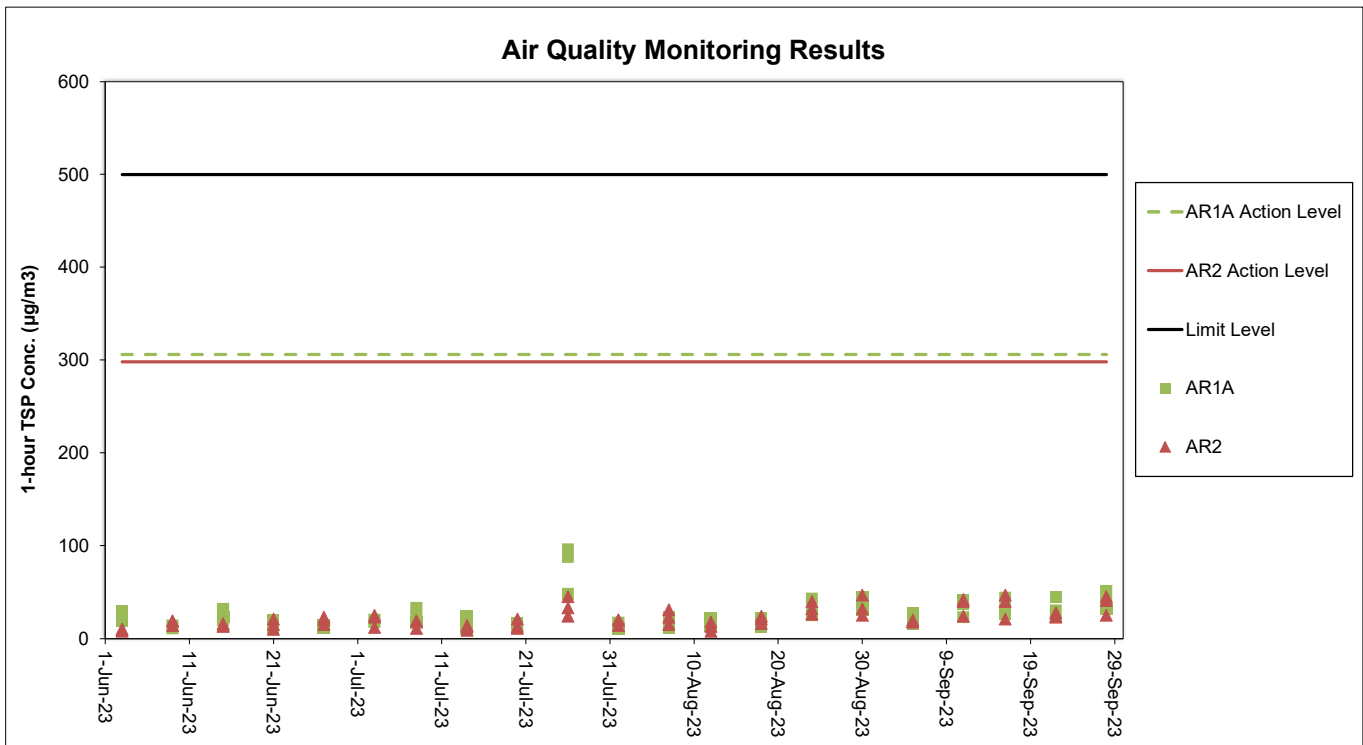


Appendix C. Monitoring Results

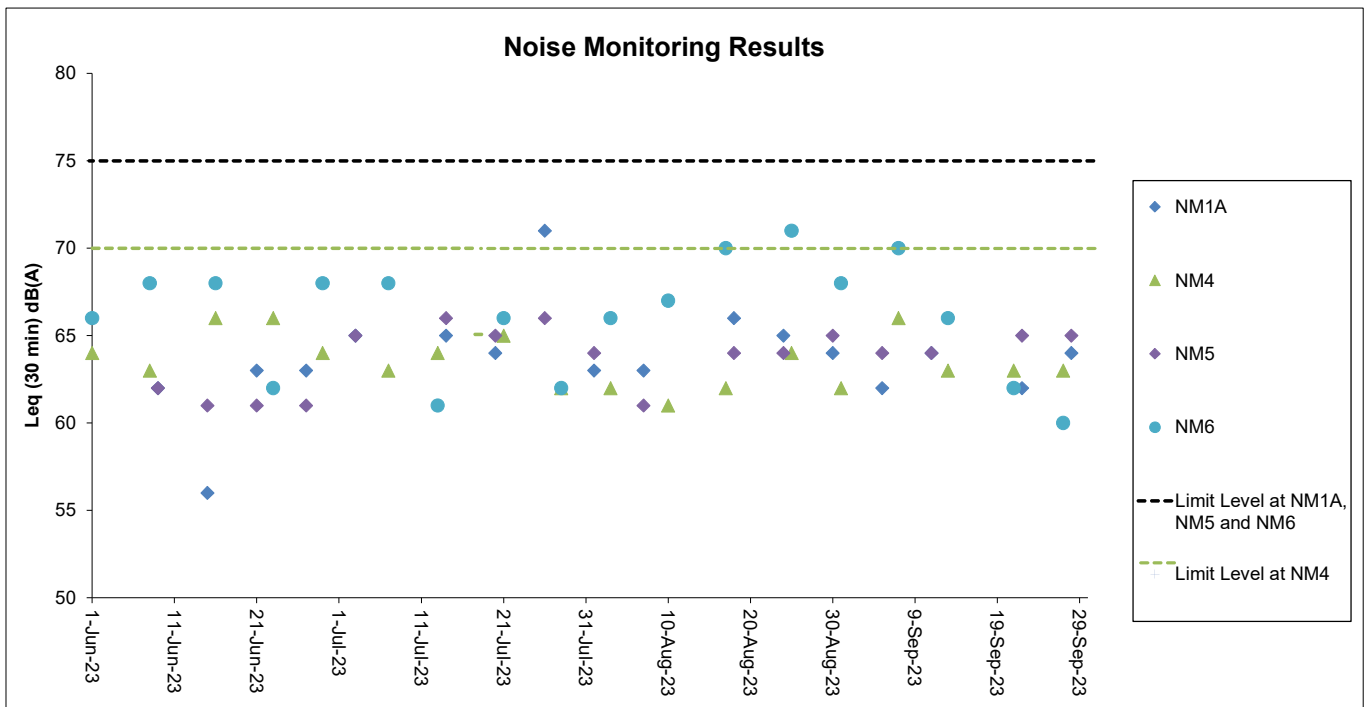
Air Quality Monitoring Results



Notes:

1. The key activities of the Project carried out in the reporting period included reclamation areas and existing airport island respectively. Works in the reclamation areas included rock armour laying works, land improvement works and filling, together with taxiways, concourse, tunnel work for Automated People Mover (APM) and Baggage Handling System (BHS) and associated works. Land-based works on existing airport island involved Terminal 2 expansion works, modification and tunnel work for APM and BHS, utilities works, road and drainage works, demolition, piling, excavation works and 132kV cable laying works.
2. General weather condition during monitoring ranged from sunny to rainy. Detailed meteorological conditions can be referred to Table 2.3 of this Report and corresponding Monthly EM&A Reports.
3. QA/ QC requirements as stipulated in the EM&A Manual were carried out during measurement.

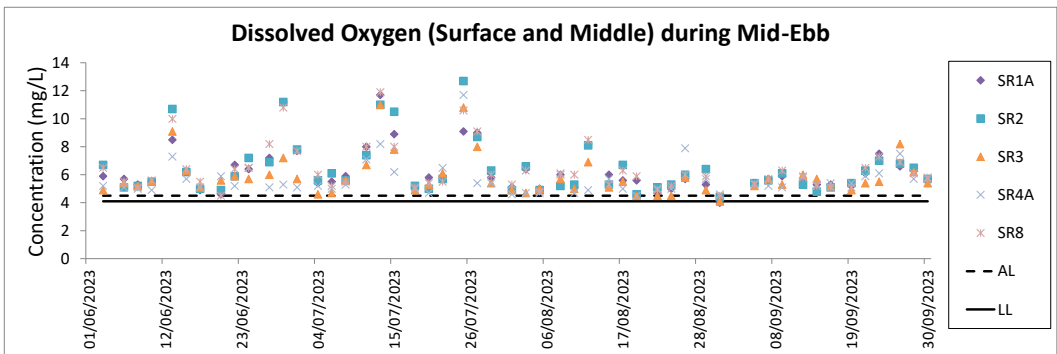
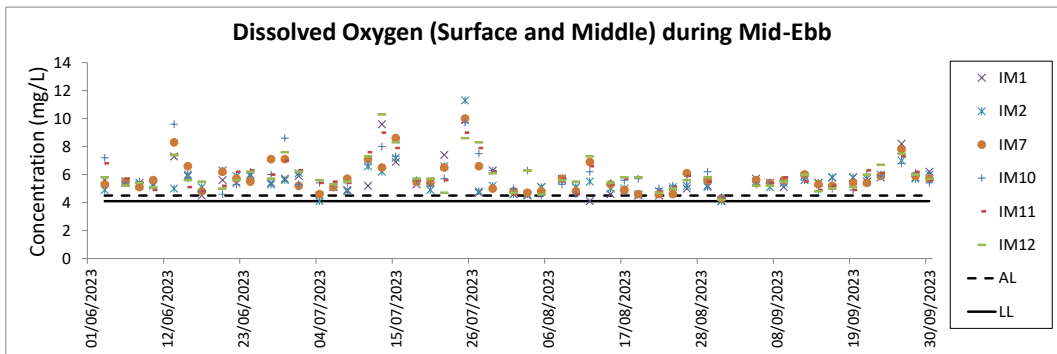
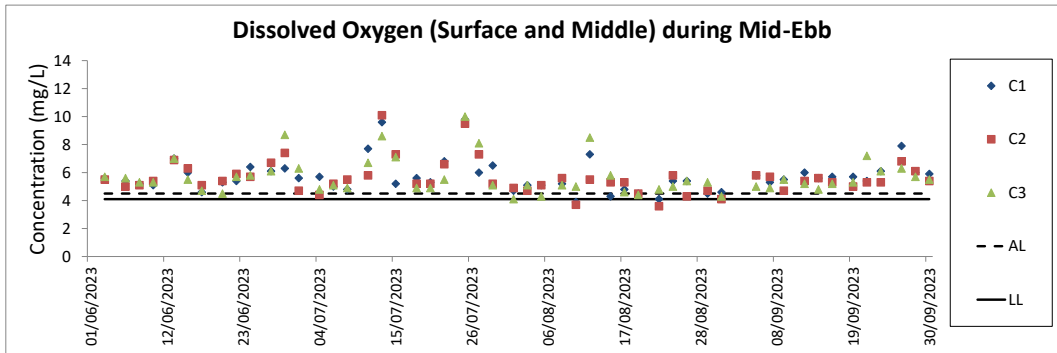
Noise Monitoring Results



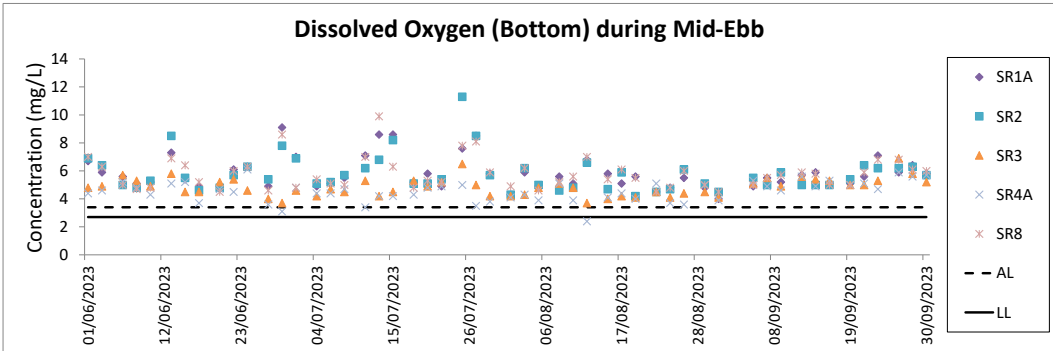
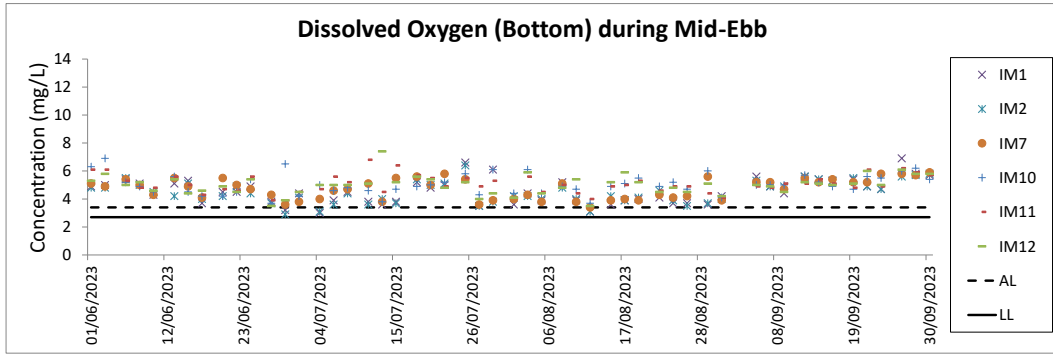
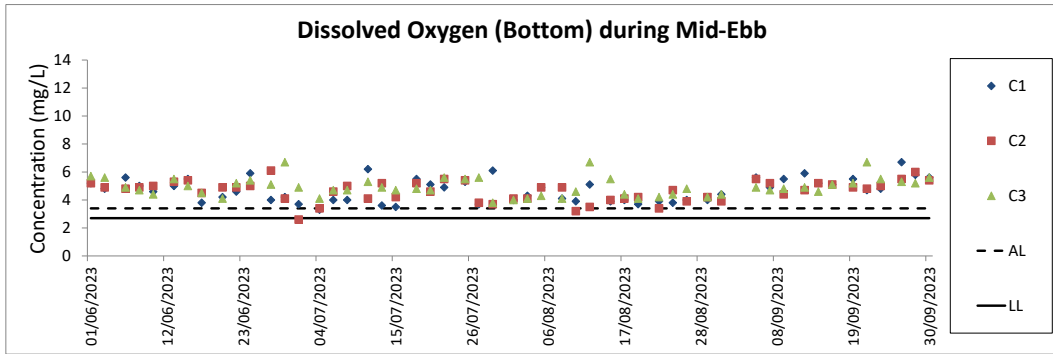
Notes:

1. The Limit Level is reduced to 70dB(A) for school and 65dB(A) during school examination period at NM4. School examination took place on 18 July during this reporting period.
2. The key activities of the Project carried out in the reporting period included reclamation areas and existing airport island respectively. Works in the reclamation areas included rock armour laying works, land improvement works and filling, together with taxiways, concourse, tunnel work for Automated People Mover (APM) and Baggage Handling System (BHS) and associated works. Land-based works on existing airport island involved Terminal 2 expansion works, modification and tunnel work for APM and BHS, utilities works, road and drainage works, demolition, piling, excavation works and 132kV cable laying works.
3. General weather condition during monitoring ranged from sunny to rainy. Detailed meteorological conditions can be referred to Table 2.6 of this Report and corresponding Monthly EM&A Reports.
4. QA/ QC requirements as stipulated in the EM&A Manual were carried out during measurement.

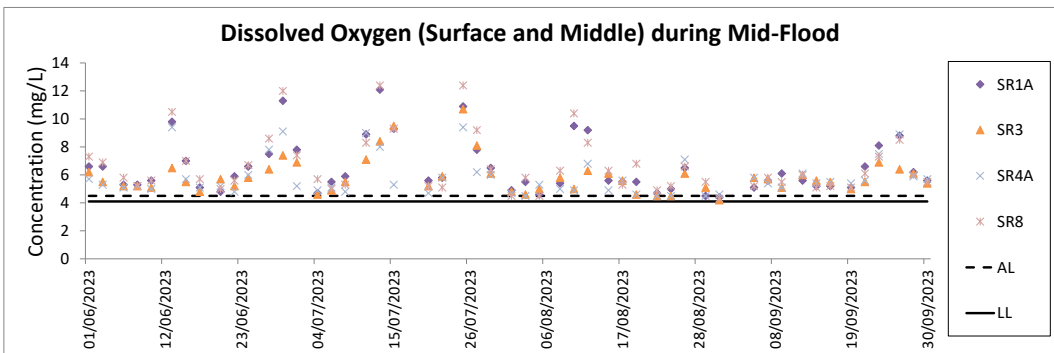
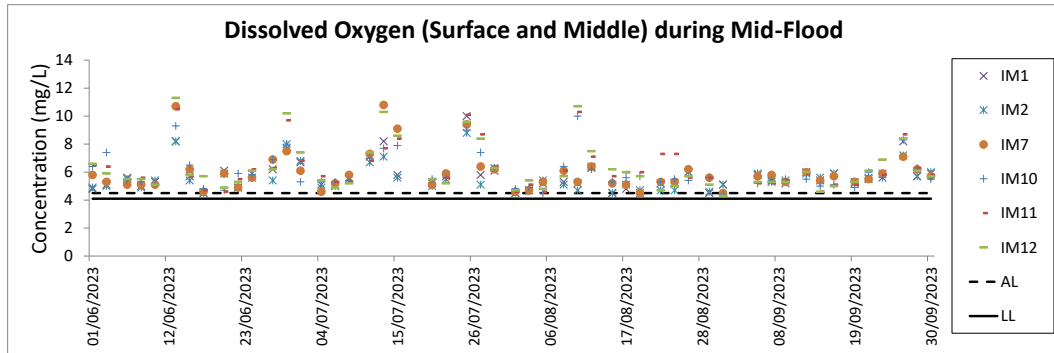
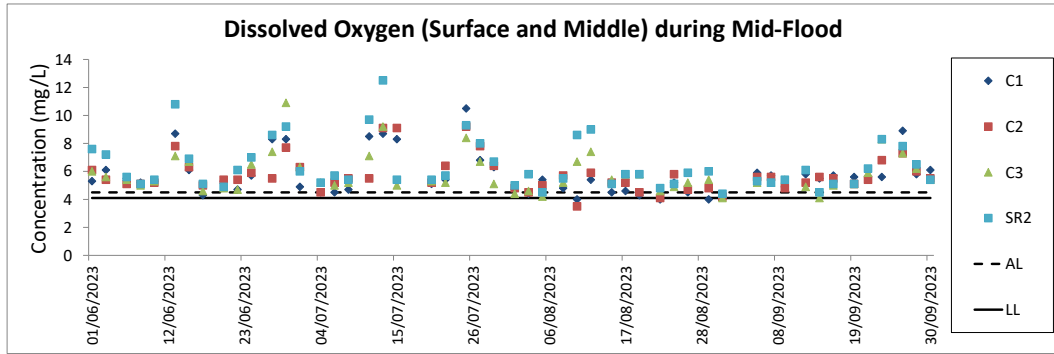
Water Quality Monitoring Results



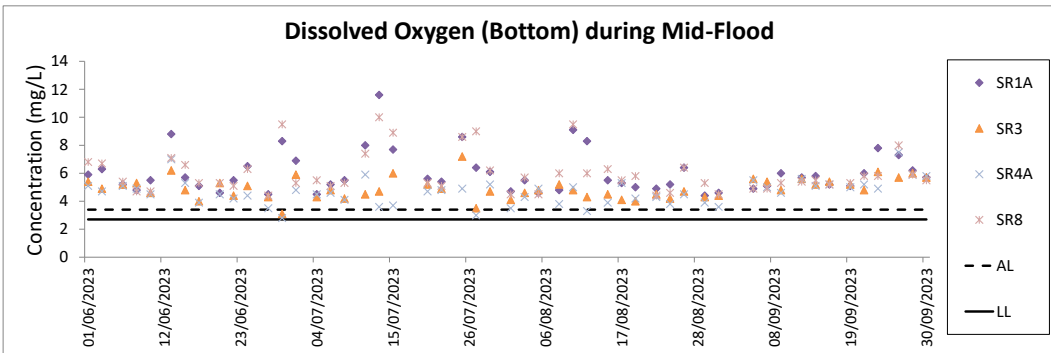
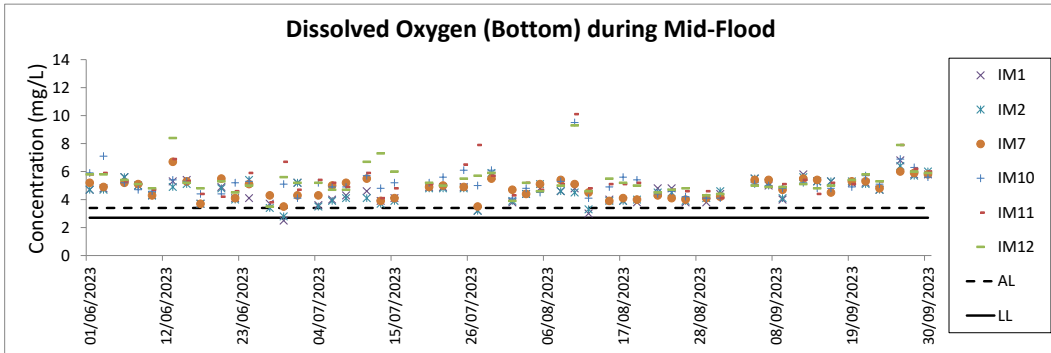
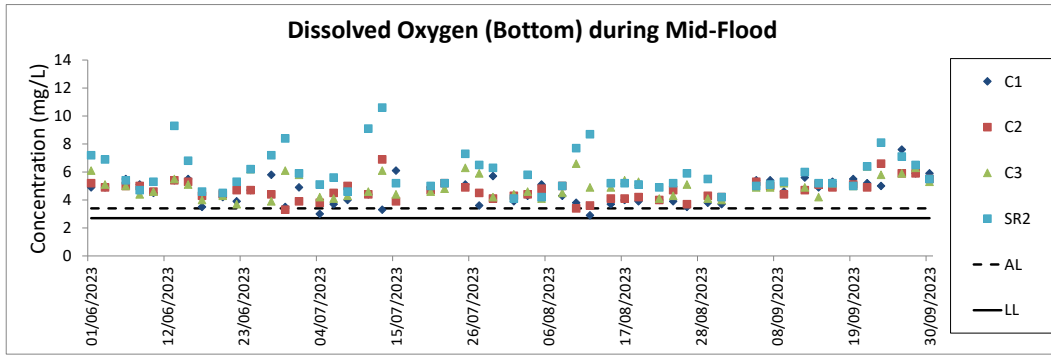
- Notes:
1. The key activities of the Project during monitoring included rock armour laying works, land improvement works and filling, together with taxiways, concourse and associated works on the reclamation areas; and land-based works involved tunnel work, utilities works, road and drainage works.
 2. General weather condition during monitoring ranged from sunny to rainy, with sea condition ranged from calm to rough. Detailed meteorological conditions can be referred to Table 2.11 of this Report and corresponding Monthly EM&A Reports.
 3. QA/ QC requirements as stipulated in the EM&A Manual were carried out during measurement.



- Notes:
1. The key activities of the Project during monitoring included rock armour laying works, land improvement works and filling, together with taxiways, concourse and associated works on the reclamation areas; and land-based works involved tunnel work, utilities works, road and drainage works.
 2. General weather condition during monitoring ranged from sunny to rainy, with sea condition ranged from calm to rough. Detailed meteorological conditions can be referred to Table 2.11 of this Report and corresponding Monthly EM&A Reports.
 3. QA/QC requirements as stipulated in the EM&A Manual were carried out during measurement.

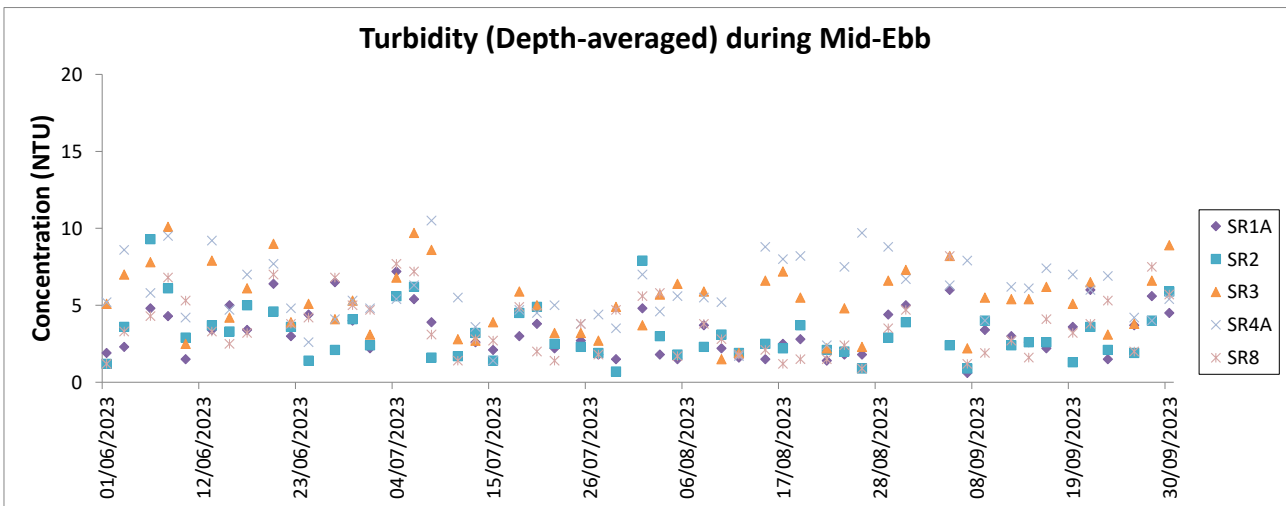
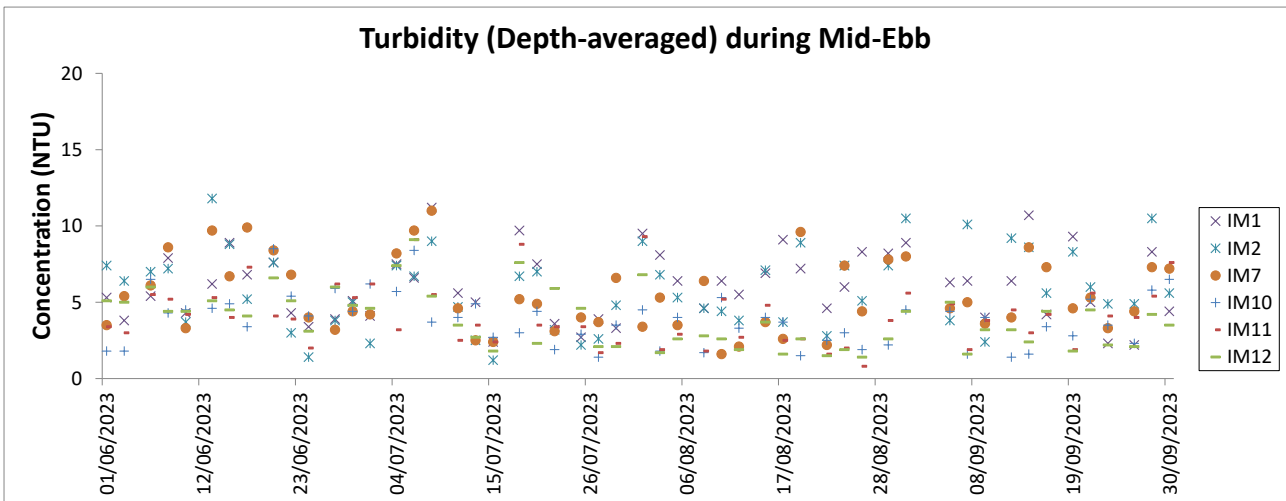
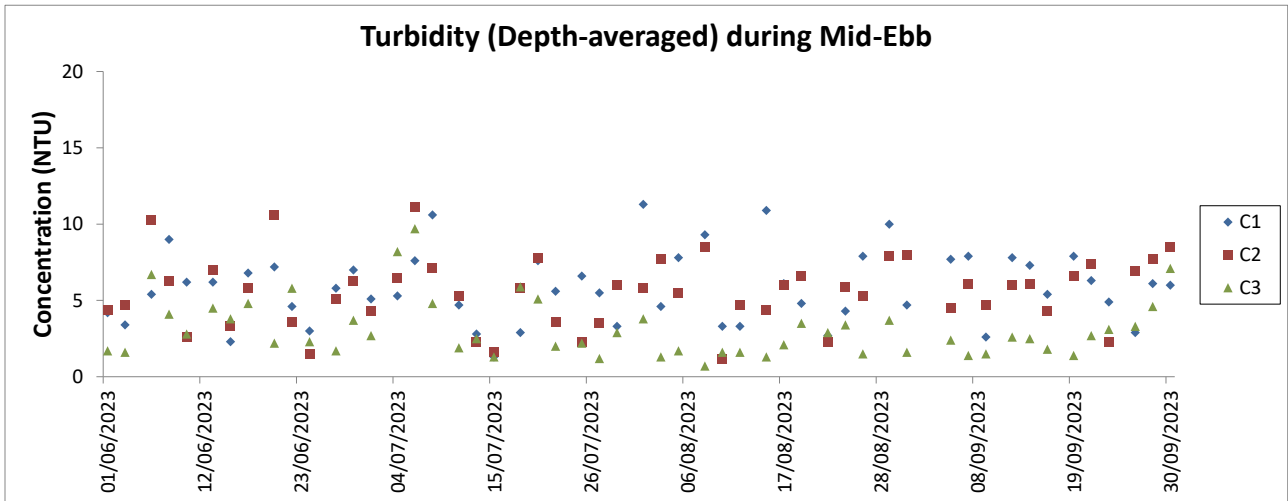


- Notes:
1. The key activities of the Project during monitoring included rock armour laying works, land improvement works and filling, together with taxiways, concourse and associated works on the reclamation areas; and land-based works involved tunnel work, utilities works, road and drainage works.
 2. General weather condition during monitoring ranged from sunny to rainy, with sea condition ranged from calm to rough. Detailed meteorological conditions can be referred to Table 2.11 of this Report and corresponding Monthly EM&A Reports.
 3. QA/QC requirements as stipulated in the EM&A Manual were carried out during measurement.



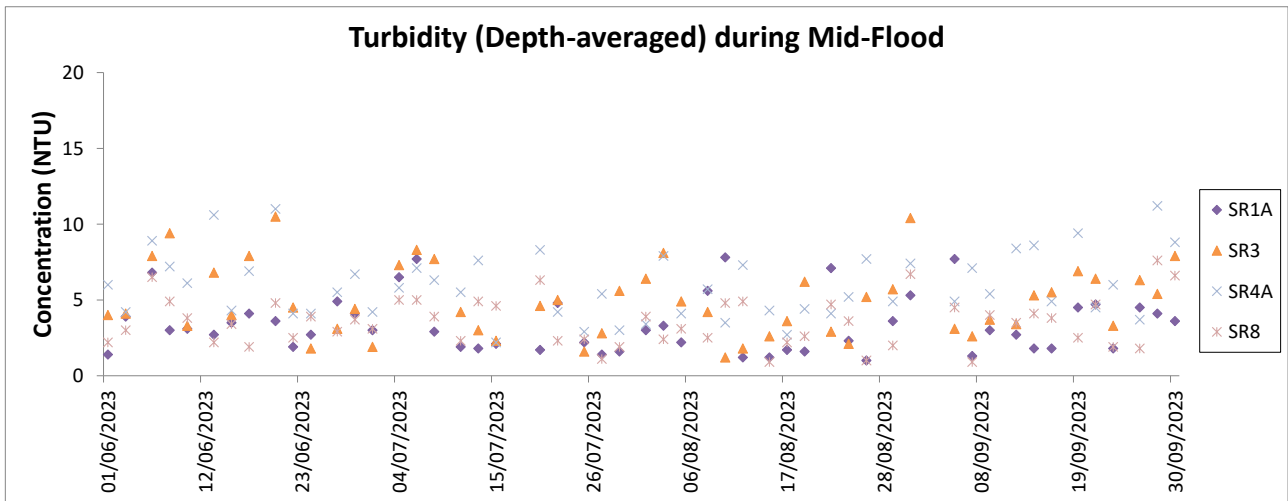
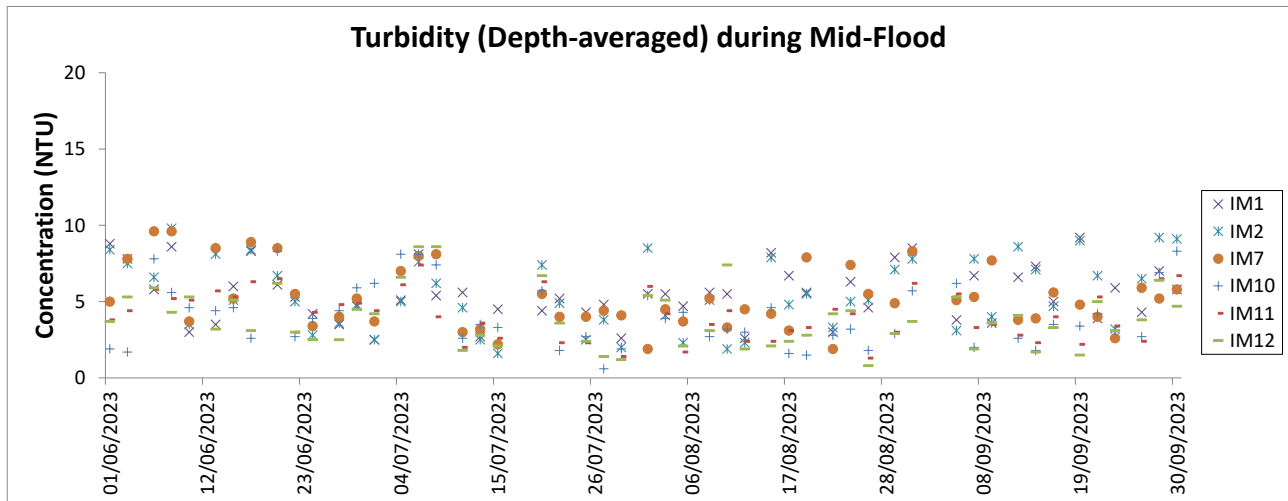
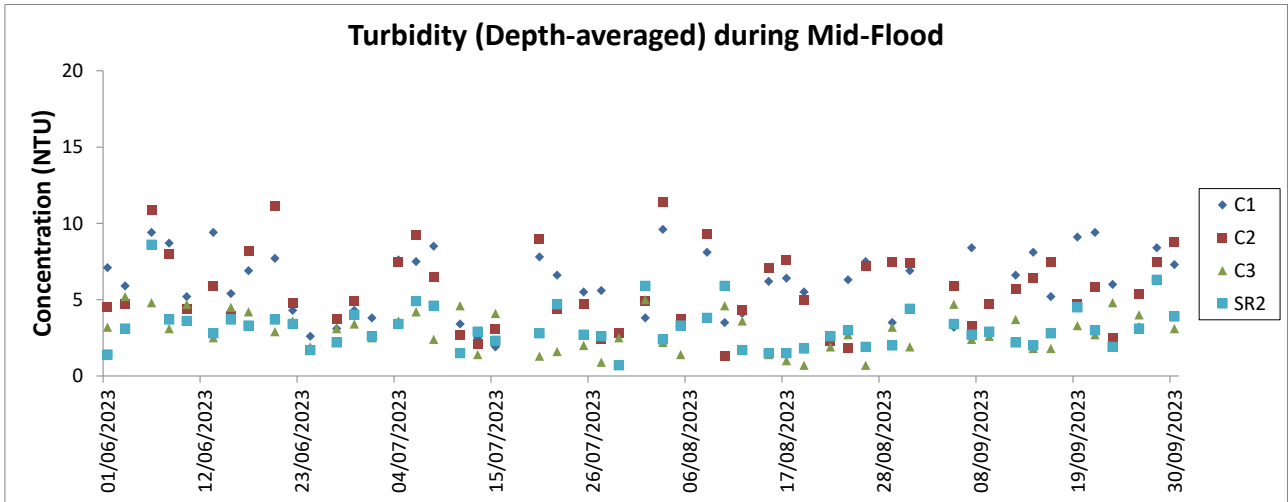
Notes:

1. The key activities of the Project during monitoring included rock armour laying works, land improvement works and filling, together with taxiways, concourse and associated works on the reclamation areas; and land-based works involved tunnel work, utilities works, road and drainage works.
2. General weather condition during monitoring ranged from sunny to rainy, with sea condition ranged from calm to rough. Detailed meteorological conditions can be referred to Table 2.11 of this Report and corresponding Monthly EM&A Reports.
3. QA/QC requirements as stipulated in the EM&A Manual were carried out during measurement.

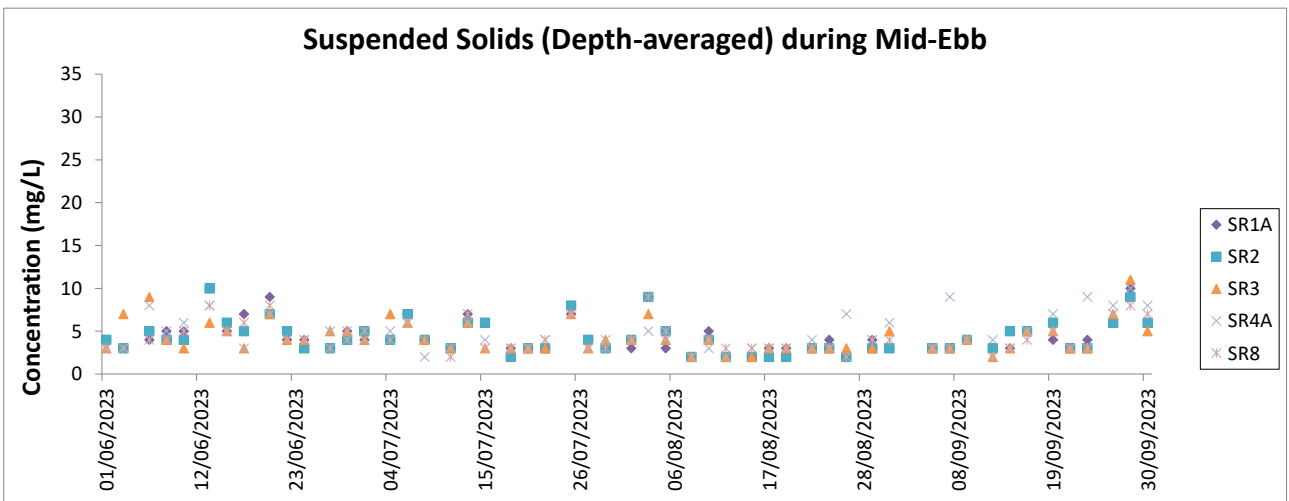
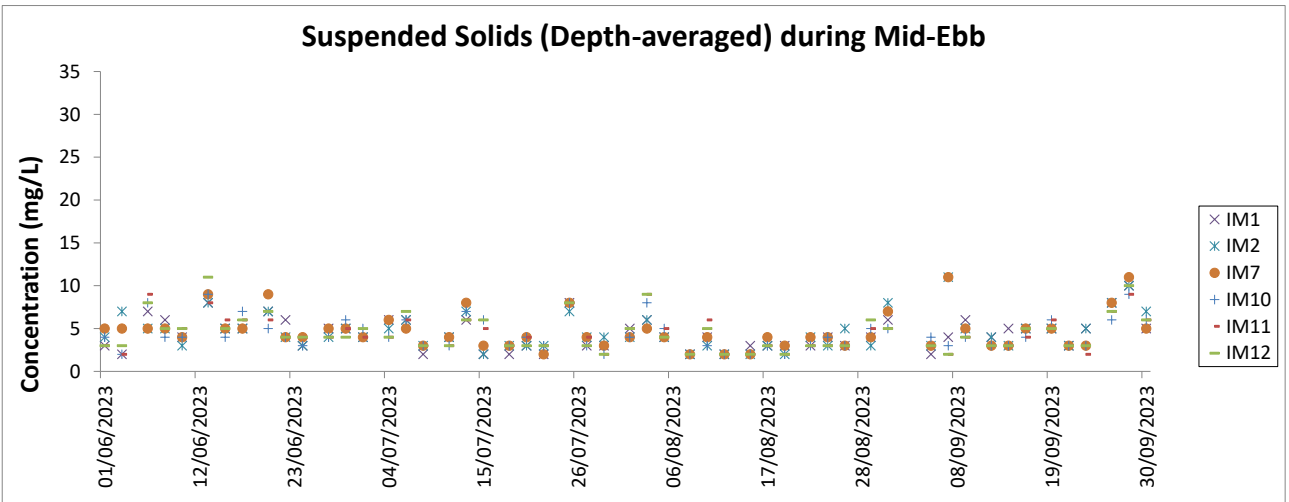
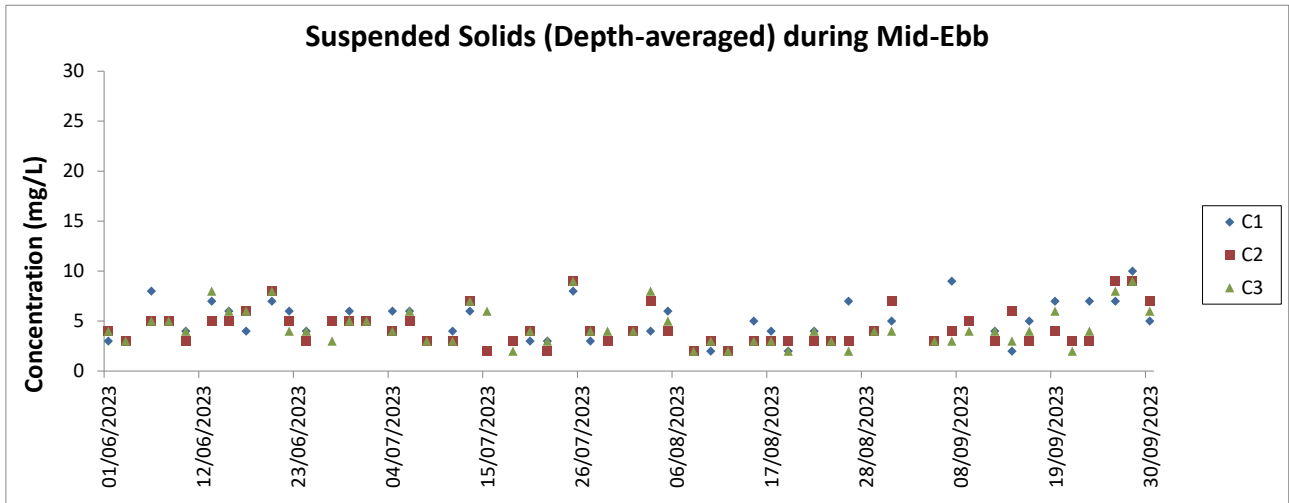


Notes:

1. The Action and Limit Levels can be referred to Table 2.8 of this Report.
2. The key activities of the Project during monitoring included rock armour laying works, land improvement works and filling, together with taxiways, concourse and associated works on the reclamation areas; and land-based works involved tunnel work, utilities works, road and drainage works.
3. General weather condition during monitoring ranged from sunny to rainy, with sea condition ranged from calm to rough. Detailed meteorological conditions can be referred to Table 2.11 of this Report and corresponding Monthly EM&A Reports.
4. QA/ QC requirements as stipulated in the EM&A Manual were carried out during measurement.

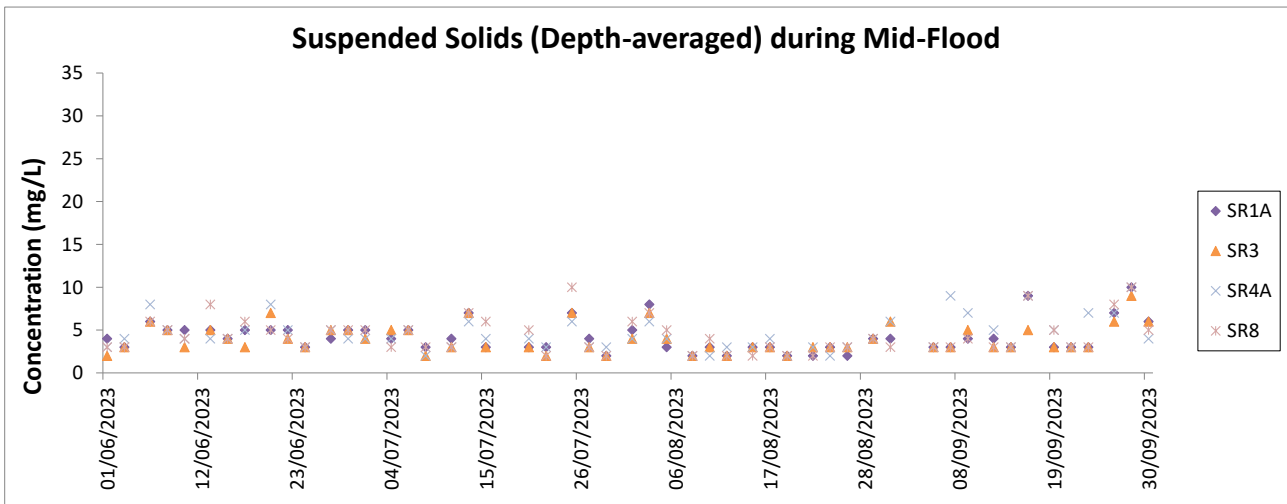
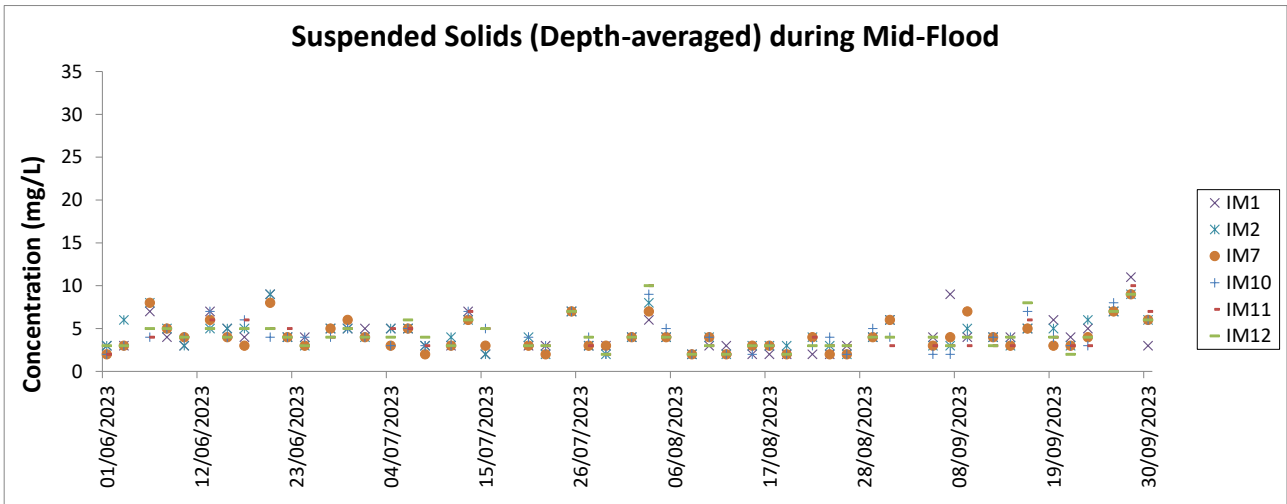
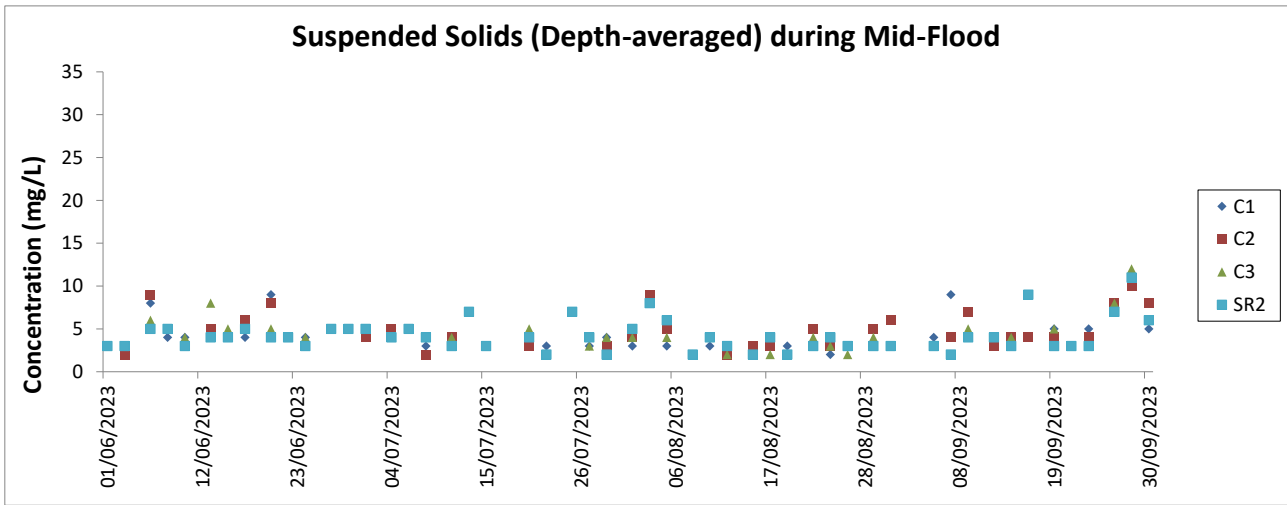


- Notes:
1. The Action and Limit Levels can be referred to Table 2.8 of this Report.
 2. The key activities of the Project during monitoring included rock armour laying works, land improvement works and filling, together with taxiways, concourse and associated works on the reclamation areas; and land-based works involved tunnel work, utilities works, road and drainage works.
 3. General weather condition during monitoring ranged from sunny to rainy, with sea condition ranged from calm to rough. Detailed meteorological conditions can be referred to Table 2.11 of this Report and corresponding Monthly EM&A Reports.
 4. QA/ QC requirements as stipulated in the EM&A Manual were carried out during measurement.



Notes:

1. The Action and Limit Levels can be referred to Table 2.8 of this Report.
2. The key activities of the Project during monitoring included rock armour laying works, land improvement works and filling, together with taxiways, concourse and associated works on the reclamation areas; and land-based works involved tunnel work, utilities works, road and drainage works.
3. General weather condition during monitoring ranged from sunny to rainy, with sea condition ranged from calm to rough. Detailed meteorological conditions can be referred to Table 2.11 of this Report and corresponding Monthly EM&A Reports.
4. QA/ QC requirements as stipulated in the EM&A Manual were carried out during measurement.



Notes:

1. The Action and Limit Levels can be referred to Table 2.8 of this Report.
2. The key activities of the Project during monitoring included rock armour laying works, land improvement works and filling, together with taxiways, concourse and associated works on the reclamation areas; and land-based works involved tunnel work, utilities works, road and drainage works.
3. General weather condition during monitoring ranged from sunny to rainy, with sea condition ranged from calm to rough. Detailed meteorological conditions can be referred to Table 2.11 of this Report and corresponding Monthly EM&A Reports.
4. QA/ QC requirements as stipulated in the EM&A Manual were carried out during measurement.

Chinese White Dolphin Monitoring Results

CWD Small Vessel Line-transect Survey

Survey Effort Data

DATE	AREA	BEAU	KM SEARCHED	SEASON	VESSEL	TYPE	P/S
04-Jul-23	NEL	2	34.860	SUMMER	32166	3RS ET	P
04-Jul-23	NEL	3	2.000	SUMMER	32166	3RS ET	P
04-Jul-23	NEL	2	10.040	SUMMER	32166	3RS ET	S
06-Jul-23	NWL	2	15.200	SUMMER	32166	3RS ET	P
06-Jul-23	NWL	3	48.600	SUMMER	32166	3RS ET	P
06-Jul-23	NWL	3	11.700	SUMMER	32166	3RS ET	S
07-Jul-23	AW	3	4.720	SUMMER	32166	3RS ET	P
07-Jul-23	WL	3	18.416	SUMMER	32166	3RS ET	P
07-Jul-23	WL	3	9.974	SUMMER	32166	3RS ET	S
07-Jul-23	WL	4	1.030	SUMMER	32166	3RS ET	S
10-Jul-23	NEL	2	10.000	SUMMER	32166	3RS ET	P
10-Jul-23	NEL	3	26.250	SUMMER	32166	3RS ET	P
10-Jul-23	NEL	2	3.950	SUMMER	32166	3RS ET	S
10-Jul-23	NEL	3	6.700	SUMMER	32166	3RS ET	S
11-Jul-23	WL	2	0.914	SUMMER	32166	3RS ET	P
11-Jul-23	WL	3	16.632	SUMMER	32166	3RS ET	P
11-Jul-23	WL	3	9.308	SUMMER	32166	3RS ET	S
11-Jul-23	AW	3	4.730	SUMMER	32166	3RS ET	P
12-Jul-23	SWL	2	42.491	SUMMER	32166	3RS ET	P
12-Jul-23	SWL	3	12.177	SUMMER	32166	3RS ET	P
12-Jul-23	SWL	2	12.122	SUMMER	32166	3RS ET	S
12-Jul-23	SWL	3	3.070	SUMMER	32166	3RS ET	S
13-Jul-23	SWL	2	31.460	SUMMER	32166	3RS ET	P
13-Jul-23	SWL	3	21.490	SUMMER	32166	3RS ET	P
13-Jul-23	SWL	2	12.180	SUMMER	32166	3RS ET	S
13-Jul-23	SWL	3	4.500	SUMMER	32166	3RS ET	S
14-Jul-23	NWL	2	63.800	SUMMER	32166	3RS ET	P
14-Jul-23	NWL	2	11.700	SUMMER	32166	3RS ET	S
02-Aug-23	SWL	2	35.924	SUMMER	32166	3RS ET	P
02-Aug-23	SWL	3	14.605	SUMMER	32166	3RS ET	P
02-Aug-23	SWL	2	13.071	SUMMER	32166	3RS ET	S
02-Aug-23	SWL	3	2.370	SUMMER	32166	3RS ET	S
03-Aug-23	SWL	2	50.260	SUMMER	32166	3RS ET	P
03-Aug-23	SWL	3	3.500	SUMMER	32166	3RS ET	P
03-Aug-23	SWL	2	14.140	SUMMER	32166	3RS ET	S
03-Aug-23	SWL	3	1.100	SUMMER	32166	3RS ET	S
08-Aug-23	AW	2	4.770	SUMMER	32166	3RS ET	P
08-Aug-23	WL	2	5.650	SUMMER	32166	3RS ET	P
08-Aug-23	WL	3	13.958	SUMMER	32166	3RS ET	P
08-Aug-23	WL	2	3.236	SUMMER	32166	3RS ET	S
08-Aug-23	WL	3	6.443	SUMMER	32166	3RS ET	S
09-Aug-23	NWL	1	3.200	SUMMER	32166	3RS ET	P
09-Aug-23	NWL	2	58.200	SUMMER	32166	3RS ET	P
09-Aug-23	NWL	3	2.100	SUMMER	32166	3RS ET	P
09-Aug-23	NWL	1	12.2	SUMMER	32166	3RS ET	S

DATE	AREA	BEAU	KM SEARCHED	SEASON	VESSEL	TYPE	P/S
16-Aug-23	NEL	2	19.31	SUMMER	32166	3RS ET	P
16-Aug-23	NEL	3	17.6	SUMMER	32166	3RS ET	P
16-Aug-23	NEL	2	8.19	SUMMER	32166	3RS ET	S
16-Aug-23	NEL	3	1.8	SUMMER	32166	3RS ET	S
17-Aug-23	NEL	2	37.41	SUMMER	32166	3RS ET	P
17-Aug-23	NEL	2	9.99	SUMMER	32166	3RS ET	S
22-Aug-23	NWL	2	63.5	SUMMER	32166	3RS ET	P
22-Aug-23	NWL	2	12.2	SUMMER	32166	3RS ET	S
24-Aug-23	AW	2	4.8	SUMMER	32166	3RS ET	P
24-Aug-23	WL	2	13.49	SUMMER	32166	3RS ET	P
24-Aug-23	WL	3	6.15	SUMMER	32166	3RS ET	P
24-Aug-23	WL	2	6.47	SUMMER	32166	3RS ET	S
24-Aug-23	WL	3	3.42	SUMMER	32166	3RS ET	S
06-Sep-23	NEL	1	2.34	AUTUMN	32166	3RS ET	P
06-Sep-23	NEL	2	34.54	AUTUMN	32166	3RS ET	P
06-Sep-23	NEL	1	0.67	AUTUMN	32166	3RS ET	S
06-Sep-23	NEL	2	9.25	AUTUMN	32166	3RS ET	S
13-Sep-23	SWL	3	55.03	AUTUMN	32166	3RS ET	P
13-Sep-23	SWL	3	14.57	AUTUMN	32166	3RS ET	S
15-Sep-23	NEL	2	13.6	AUTUMN	32166	3RS ET	P
15-Sep-23	NEL	3	23.82	AUTUMN	32166	3RS ET	P
15-Sep-23	NEL	2	5.98	AUTUMN	32166	3RS ET	S
15-Sep-23	NEL	3	4.2	AUTUMN	32166	3RS ET	S
18-Sep-23	SWL	2	17.1	AUTUMN	32166	3RS ET	P
18-Sep-23	SWL	3	36.7	AUTUMN	32166	3RS ET	P
18-Sep-23	SWL	2	2.74	AUTUMN	32166	3RS ET	S
18-Sep-23	SWL	3	13	AUTUMN	32166	3RS ET	S
20-Sep-23	WL	1	9.19	AUTUMN	32166	3RS ET	P
20-Sep-23	WL	2	7.4	AUTUMN	32166	3RS ET	P
20-Sep-23	WL	3	1.904	AUTUMN	32166	3RS ET	P
20-Sep-23	WL	1	4.95	AUTUMN	32166	3RS ET	S
20-Sep-23	WL	2	4.11	AUTUMN	32166	3RS ET	S
20-Sep-23	WL	3	2.186	AUTUMN	32166	3RS ET	S
20-Sep-23	AW	1	4.63	AUTUMN	32166	3RS ET	P
21-Sep-23	AW	2	4.56	AUTUMN	32166	3RS ET	P
21-Sep-23	WL	1	3.93	AUTUMN	32166	3RS ET	P
21-Sep-23	WL	2	12.869	AUTUMN	32166	3RS ET	P
21-Sep-23	WL	2	11.546	AUTUMN	32166	3RS ET	S
22-Sep-23	NWL	2	63.9	AUTUMN	32166	3RS ET	P
22-Sep-23	NWL	2	12	AUTUMN	32166	3RS ET	S
25-Sep-23	NWL	2	1.62	AUTUMN	32166	3RS ET	P
25-Sep-23	NWL	3	43.48	AUTUMN	32166	3RS ET	P
25-Sep-23	NWL	4	18.2	AUTUMN	32166	3RS ET	P
25-Sep-23	NWL	3	8.9	AUTUMN	32166	3RS ET	S
25-Sep-23	NWL	4	3.2	AUTUMN	32166	3RS ET	S

CWD Small Vessel Line-transect Survey

Sighting Data

DATE	STG #	TIME	CWD/FP	GP SZ	AREA	BEAU	PSD	EFFORT	TYPE	DEC LAT	DEC LON	SEASON	BOAT ASSOC.	P/S
07-Jul-23	1	1101	CWD	1	WL	3	268	ON	3RS ET	22.2415	113.8368	SUMMER	NONE	P
07-Jul-23	2	1200	CWD	1	WL	3	91	ON	3RS ET	22.1961	113.8325	SUMMER	NONE	P
07-Jul-23	3	1215	CWD	15	WL	3	134	ON	3RS ET	22.1875	113.8401	SUMMER	NONE	P
11-Jul-23	1	1056	CWD	3	WL	3	275	ON	3RS ET	22.2416	113.8358	SUMMER	NONE	P
11-Jul-23	2	1133	CWD	4	WL	3	35	ON	3RS ET	22.2230	113.8247	SUMMER	NONE	P
11-Jul-23	3	1142	CWD	5	WL	3	6	ON	3RS ET	22.2160	113.8198	SUMMER	NONE	S
11-Jul-23	4	1214	CWD	3	WL	3	390	ON	3RS ET	22.2052	113.8313	SUMMER	NONE	P
11-Jul-23	5	1219	CWD	3	WL	3	170	ON	3RS ET	22.1975	113.8277	SUMMER	NONE	S
11-Jul-23	6	1248	CWD	1	WL	3	26	ON	3RS ET	22.1962	113.8345	SUMMER	NONE	P
11-Jul-23	7	1307	CWD	2	WL	3	339	ON	3RS ET	22.1881	113.8414	SUMMER	NONE	S
12-Jul-23	1	1047	FP	3	SWL	2	46	ON	3RS ET	22.1590	113.9357	SUMMER	NONE	P
12-Jul-23	2	1123	FP	2	SWL	2	39	ON	3RS ET	22.2022	113.9274	SUMMER	NONE	P
12-Jul-23	3	1145	FP	1	SWL	2	211	ON	3RS ET	22.1711	113.9188	SUMMER	NONE	P
12-Jul-23	4	1350	CWD	1	SWL	2	145	ON	3RS ET	22.1895	113.8769	SUMMER	NONE	P
13-Jul-23	1	1054	FP	1	SWL	2	34	ON	3RS ET	22.1510	113.9363	SUMMER	NONE	P
13-Jul-23	2	1227	CWD	1	SWL	2	61	ON	3RS ET	22.1894	113.9070	SUMMER	NONE	S
02-Aug-23	1	1023	CWD	1	SWL	2	477	ON	3RS ET	22.2085	113.93618	SUMMER	NONE	P
02-Aug-23	2	1202	FP	11	SWL	2	94	ON	3RS ET	22.1441	113.91764	SUMMER	NONE	P
02-Aug-23	3	1346	CWD	1	SWL	3	102	ON	3RS ET	22.2000	113.88808	SUMMER	NONE	P
02-Aug-23	4	1416	CWD	4	SWL	3	171	ON	3RS ET	22.1882	113.87865	SUMMER	NONE	P
02-Aug-23	5	1444	CWD	1	SWL	3	247	ON	3RS ET	22.1624	113.86891	SUMMER	NONE	P
02-Aug-23	6	1458	CWD	8	SWL	3	523	ON	3RS ET	22.1687	113.86881	SUMMER	NONE	P
02-Aug-23	7	1529	CWD	1	SWL	2	294	ON	3RS ET	22.1982	113.86840	SUMMER	PURSE SEINER	P
02-Aug-23	8	1549	CWD	3	SWL	2	225	ON	3RS ET	22.1934	113.85866	SUMMER	NONE	P
02-Aug-23	9	1605	CWD	2	SWL	2	202	ON	3RS ET	22.1849	113.85912	SUMMER	NONE	P
02-Aug-23	10	1630	CWD	8	SWL	2	272	ON	3RS ET	22.1906	113.84947	SUMMER	NONE	P
03-Aug-23	1	1152	FP	2	SWL	2	157	ON	3RS ET	22.1564	113.91727	SUMMER	NONE	P
03-Aug-23	2	1310	FP	3	SWL	2	208	ON	3RS ET	22.1495	113.89398	SUMMER	NONE	S
03-Aug-23	3	1352	CWD	4	SWL	2	346	ON	3RS ET	22.1949	113.87848	SUMMER	NONE	P
03-Aug-23	4	1523	CWD	5	SWL	3	343	ON	3RS ET	22.1889	113.85077	SUMMER	PURSE SEINER	P
08-Aug-23	1	1111	CWD	1	WL	2	108	ON	3RS ET	22.2234	113.83013	SUMMER	NONE	P

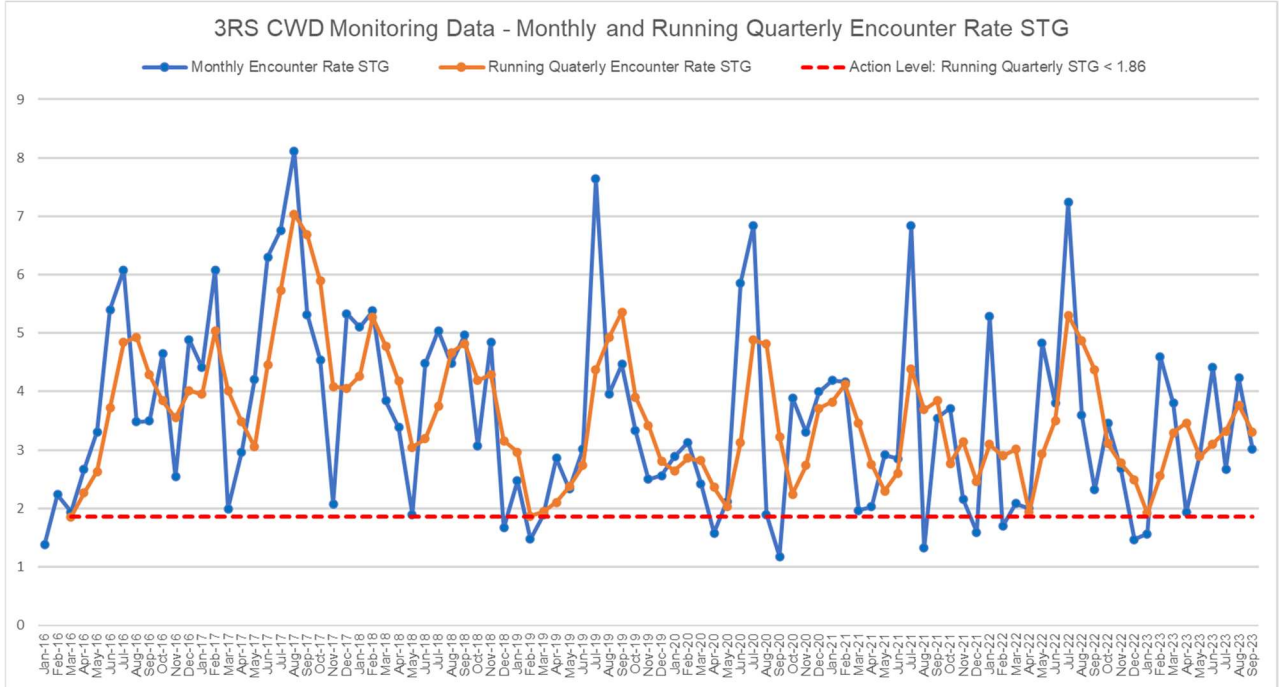
DATE	STG #	TIME	CWD/FP	GP SZ	AREA	BEAU	PSD	EFFORT	TYPE	DEC LAT	DEC LON	SEASON	BOAT ASSOC.	P/S
08-Aug-23	2	1131	CWD	2	WL	3	53	ON	3RS ET	22.2147	113.82890	SUMMER	NONE	P
08-Aug-23	3	1155	CWD	3	WL	2	473	ON	3RS ET	22.2055	113.82426	SUMMER	NONE	P
08-Aug-23	4	1213	CWD	3	WL	2	15	ON	3RS ET	22.2017	113.82381	SUMMER	NONE	S
08-Aug-23	5	1226	CWD	4	WL	3	23	ON	3RS ET	22.1974	113.82694	SUMMER	NONE	S
08-Aug-23	6	1256	CWD	6	WL	3	537	ON	3RS ET	22.1876	113.83260	SUMMER	NONE	P
24-Aug-23	1	1118	CWD	2	WL	3	108	ON	3RS ET	22.2176	113.81963	SUMMER	NONE	S
24-Aug-23	2	1147	CWD	2	WL	3	204	ON	3RS ET	22.2056	113.82862	SUMMER	NONE	P
13-Sep-23	1	1227	CWD	6	SWL	3	19	ON	3RS ET	22.188770	113.90627	AUTUMN	NONE	P
18-Sep-23	1	1029	FP	2	SWL	2	365	ON	3RS ET	22.197349	113.93566	AUTUMN	NONE	P
18-Sep-23	2	1037	FP	3	SWL	2	55	ON	3RS ET	22.184478	113.93564	AUTUMN	NONE	P
18-Sep-23	3	1053	FP	6	SWL	2	198	ON	3RS ET	22.153702	113.93678	AUTUMN	NONE	P
20-Sep-23	1	1030	CWD	2	WL	1	234	ON	3RS ET	22.261023	113.85093	AUTUMN	NONE	P
20-Sep-23	2	1042	CWD	2	WL	1	265	ON	3RS ET	22.260349	113.84229	AUTUMN	NONE	P
20-Sep-23	3	1112	CWD	1	WL	1	290	ON	3RS ET	22.241103	113.84425	AUTUMN	NONE	P
20-Sep-23	4	1124	CWD	1	WL	1	236	ON	3RS ET	22.241593	113.83484	AUTUMN	NONE	P
21-Sep-23	1	1034	CWD	3	WL	2	138	ON	3RS ET	22.261205	113.84683	AUTUMN	NONE	P
21-Sep-23	2	1122	CWD	3	WL	2	297	ON	3RS ET	22.223088	113.83525	AUTUMN	NONE	P
21-Sep-23	3	1156	CWD	6	WL	2	77	ON	3RS ET	22.214777	113.82498	AUTUMN	NONE	P
21-Sep-23	4	1223	CWD	1	WL	2	163	ON	3RS ET	22.206057	113.82903	AUTUMN	NONE	P
21-Sep-23	5	1231	CWD	2	WL	2	41	ON	3RS ET	22.205669	113.82487	AUTUMN	NONE	P
21-Sep-23	6	1247	CWD	1	WL	2	22	ON	3RS ET	22.196451	113.83561	AUTUMN	NONE	P
21-Sep-23	7	1254	CWD	3	WL	2	913	ON	3RS ET	22.193651	113.84263	AUTUMN	NONE	S
21-Sep-23	8	1319	CWD	1	WL	2	634	ON	3RS ET	22.187905	113.83346	AUTUMN	NONE	P

Abbreviations: STG# = Sighting Number; GP SZ = Group Size; BEAU = Beaufort Sea State; PSD = Perpendicular Distance (in metres); N/A = Not Applicable; DEC LAT = Latitude (WGS84 in Decimal), DEC LON = Longitude (WGS84 in Decimal); BOAT ASSOC. = Fishing Boat Association; P/S = Primary Transect / Secondary Transect.

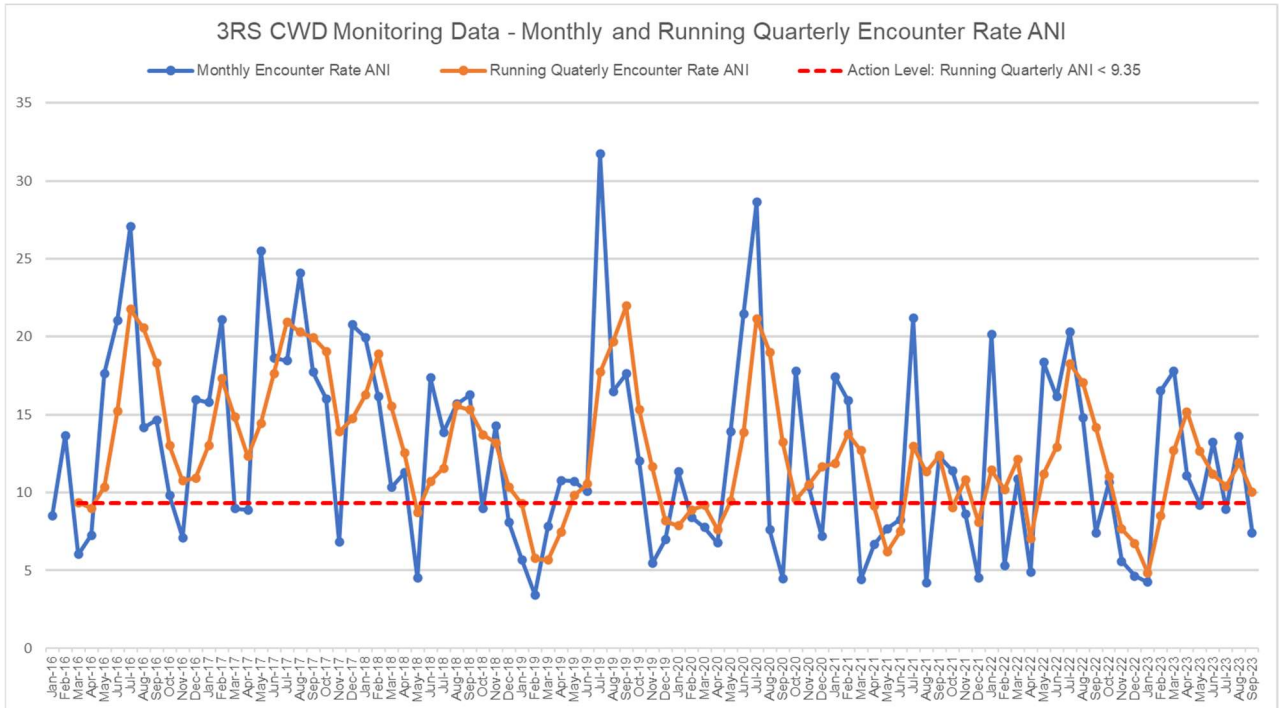
Sighting data of finless porpoise (FP) are presented for reference only. No relevant figure or text will be mentioned in the quarterly EM&A report. All FP sightings are excluded in calculation.

Graphical Presentation of Monthly and Running Quarterly Encounter Rates for the entire monitoring period

Encounter Rate STG:






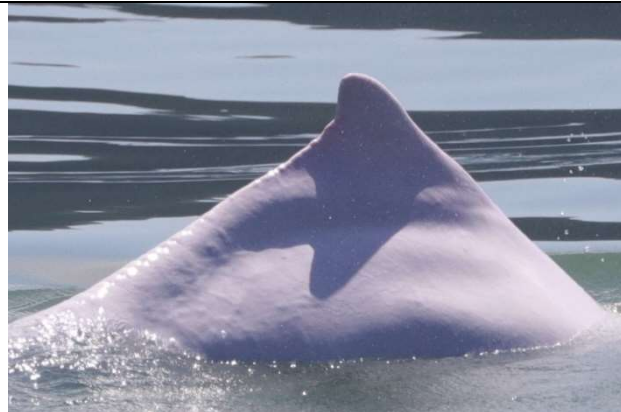




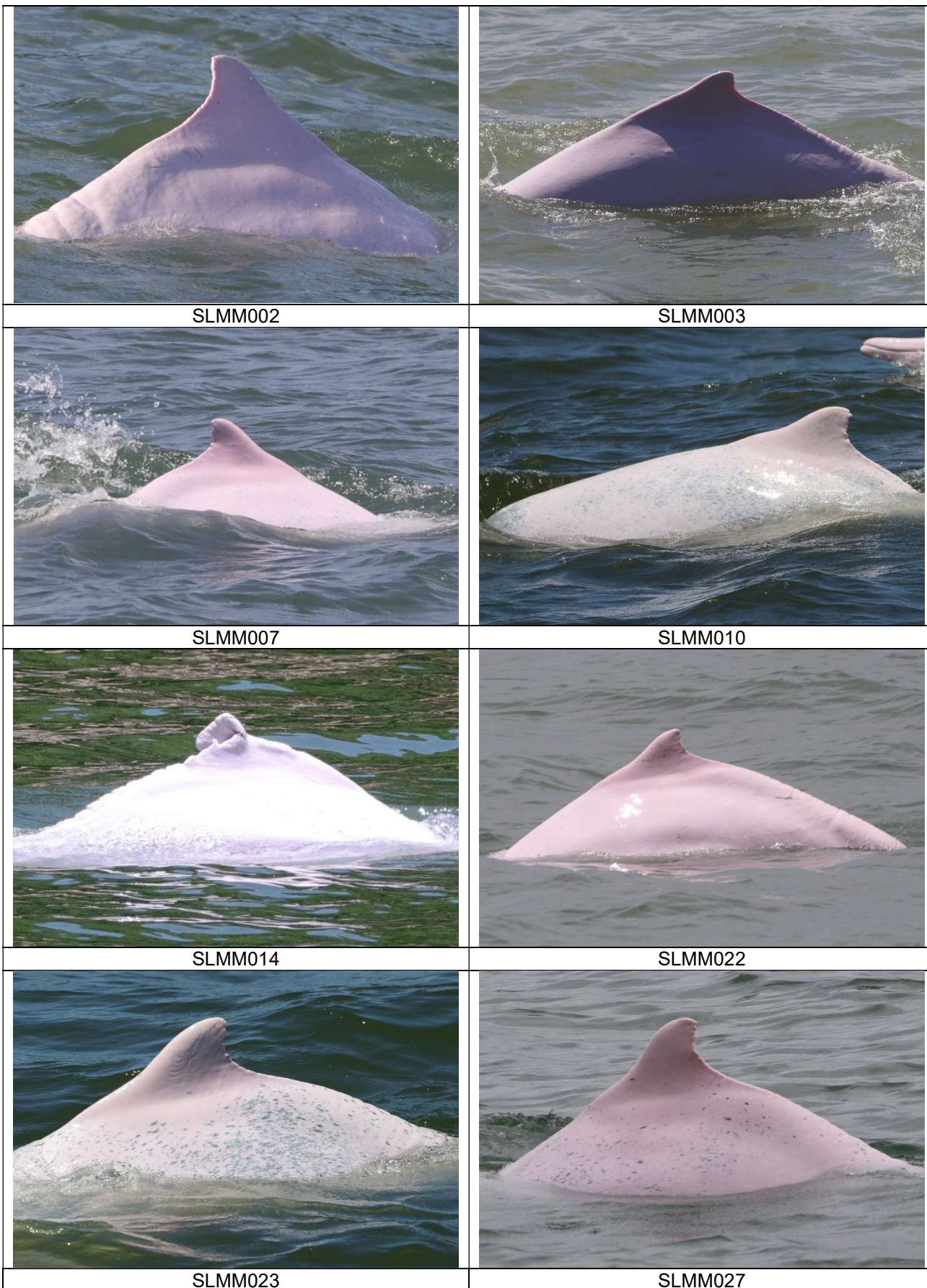
Encounter Rate ANI:



CWD Small Vessel Line-transect Survey

Photo Identification

	
NLMM001	NLMM016
	
NLMM027	NLMM028
	
NLMM055	NLMM058
	
NLMM063	NLMM070





SLMM029



SLMM037



SLMM044



SLMM049



SLMM052



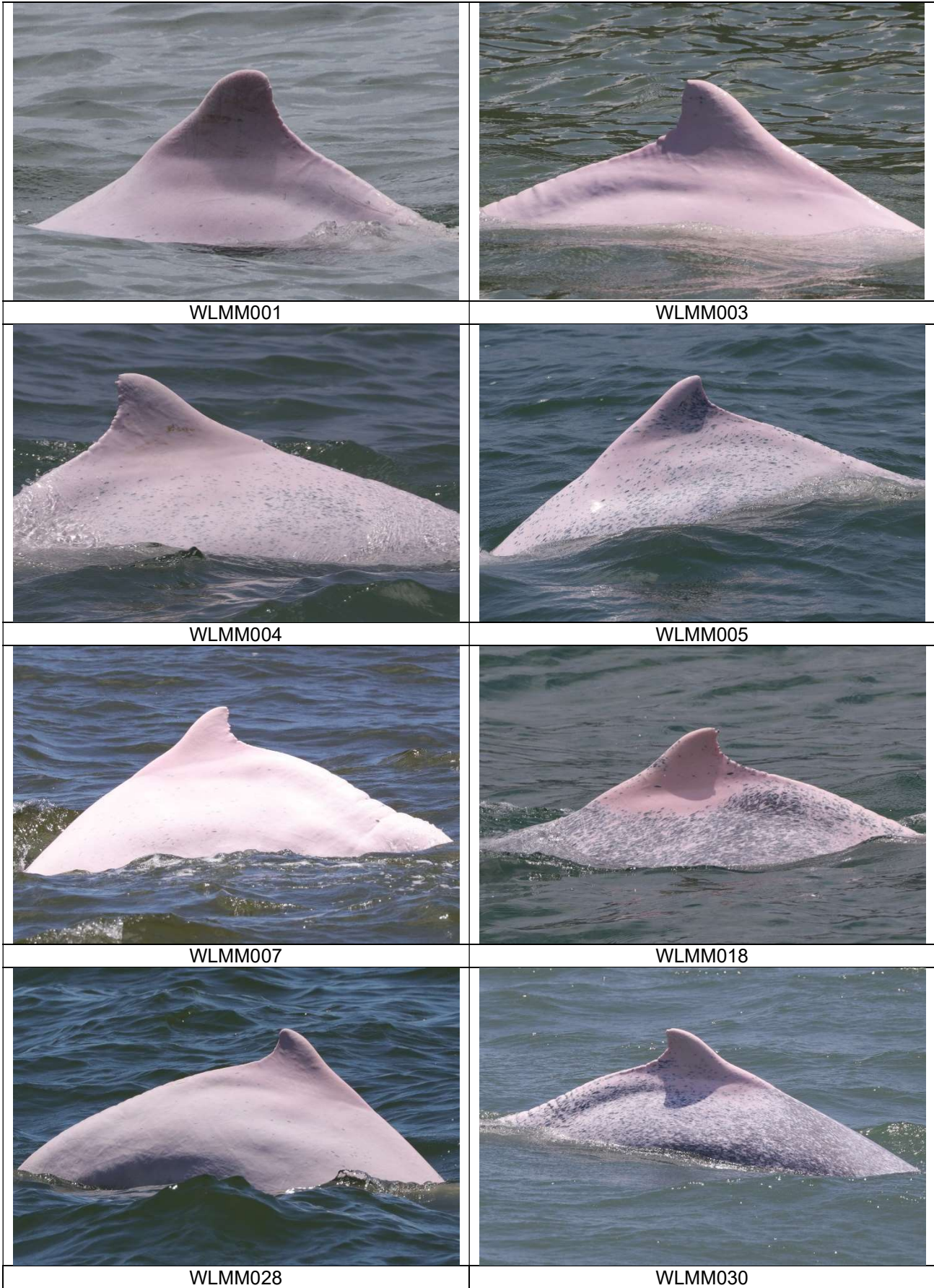
SLMM059



SLMM060



SLMM073



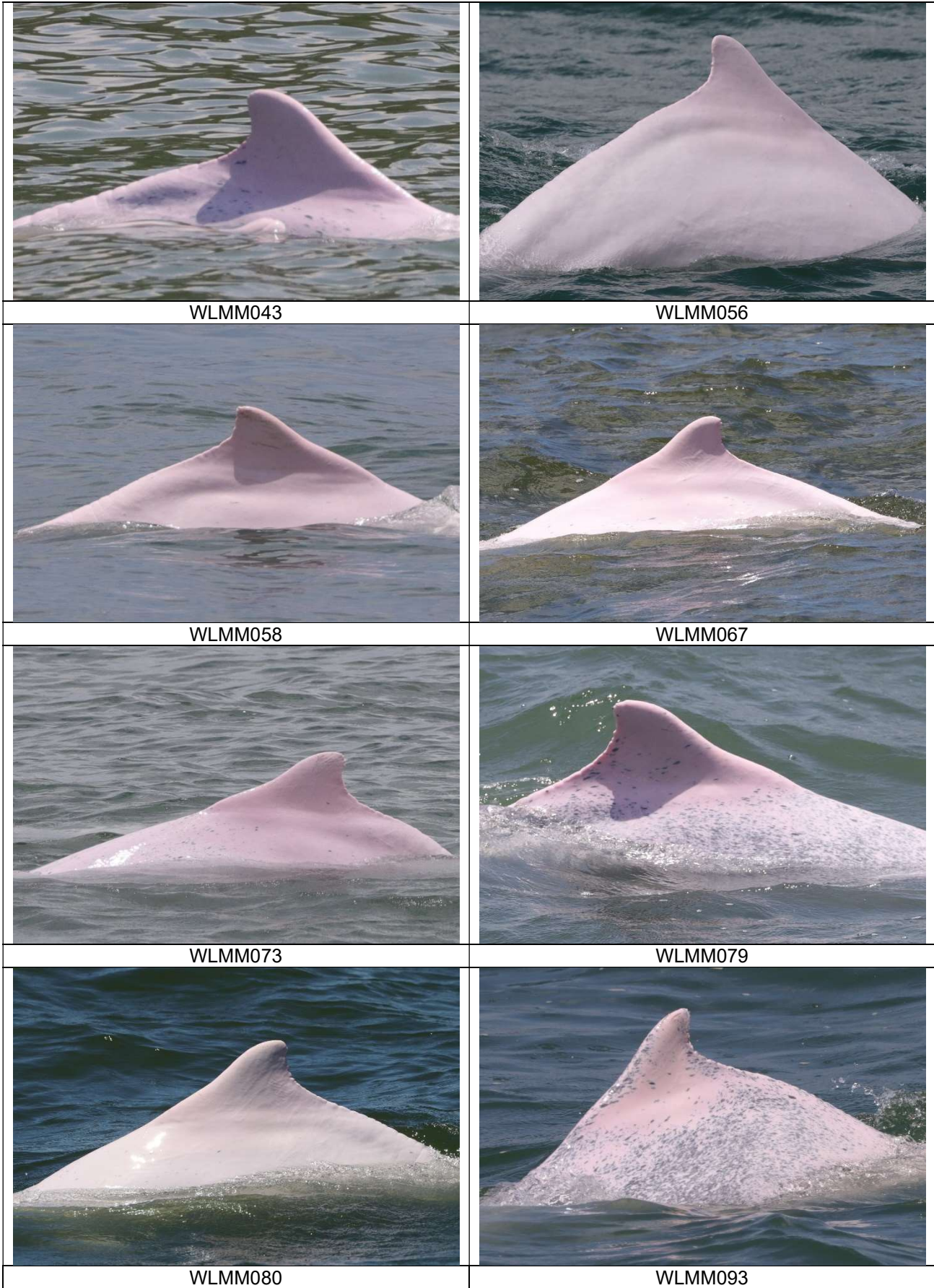
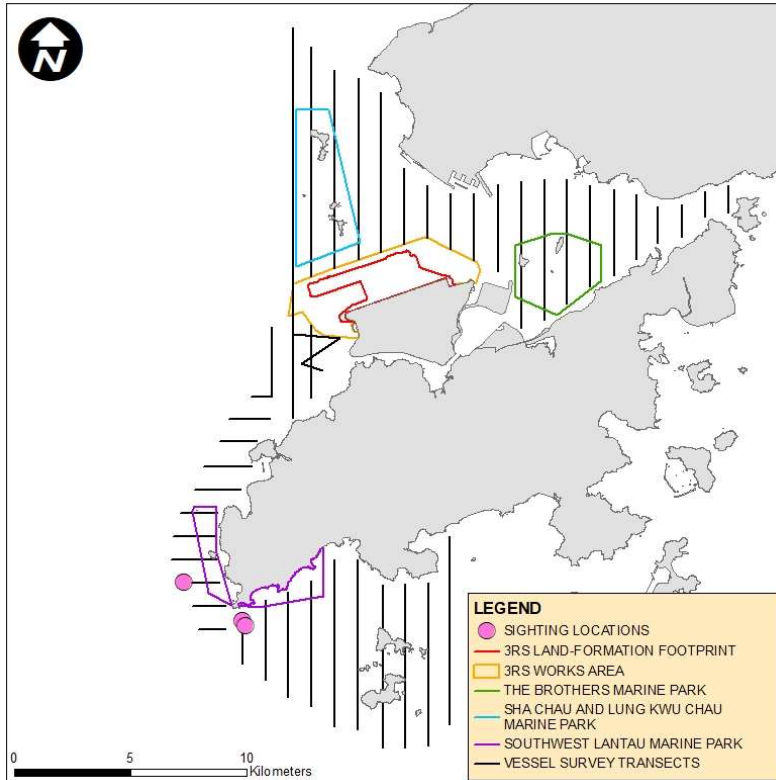


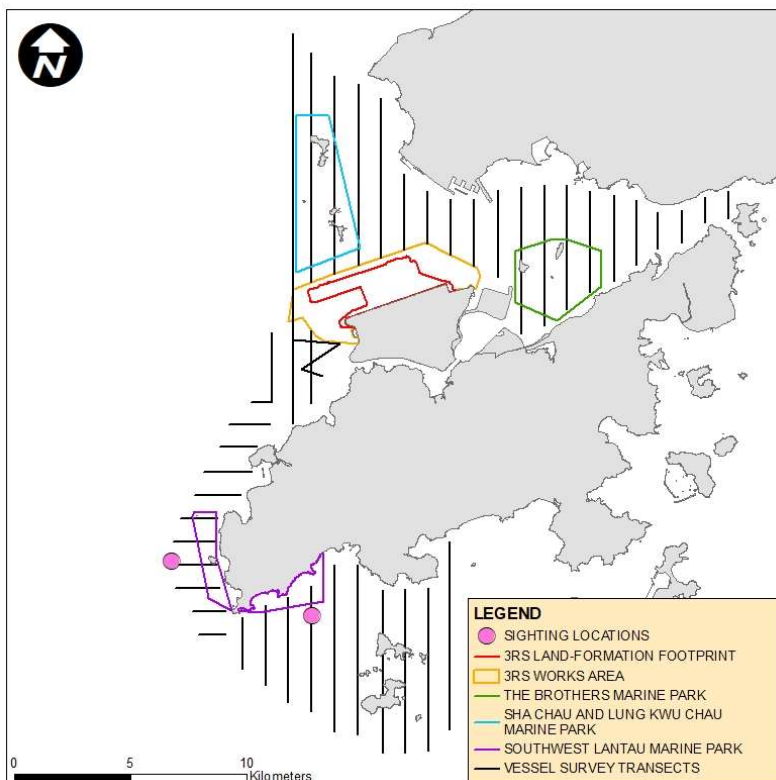


Photo Identification – Re-sighting Locations

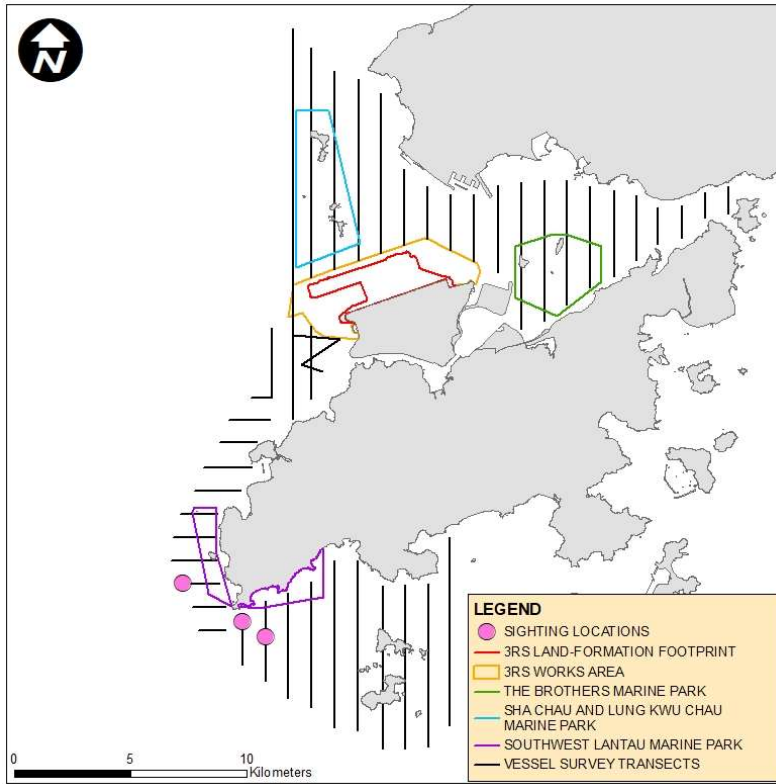
SLMM002



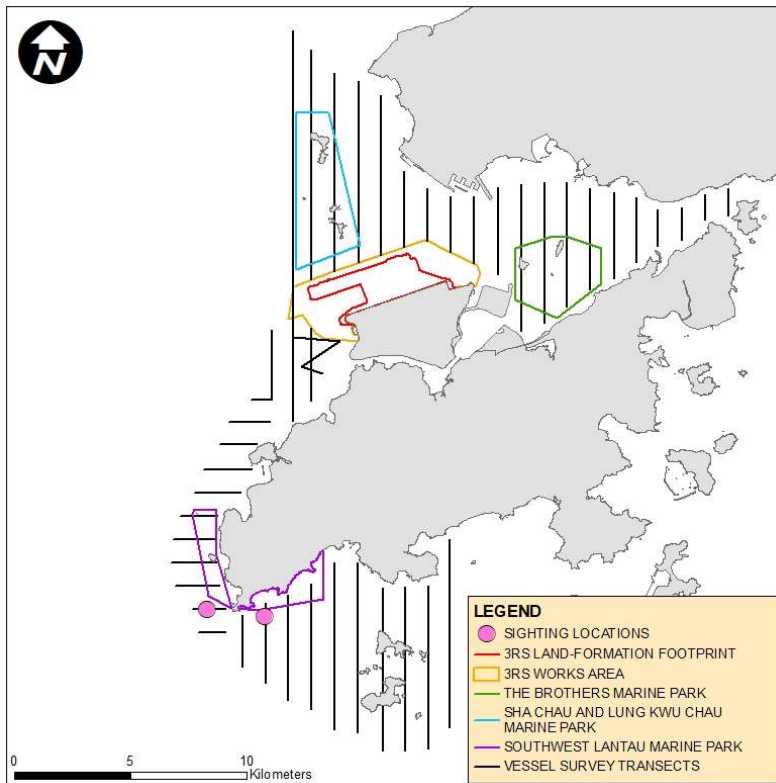
SLMM010



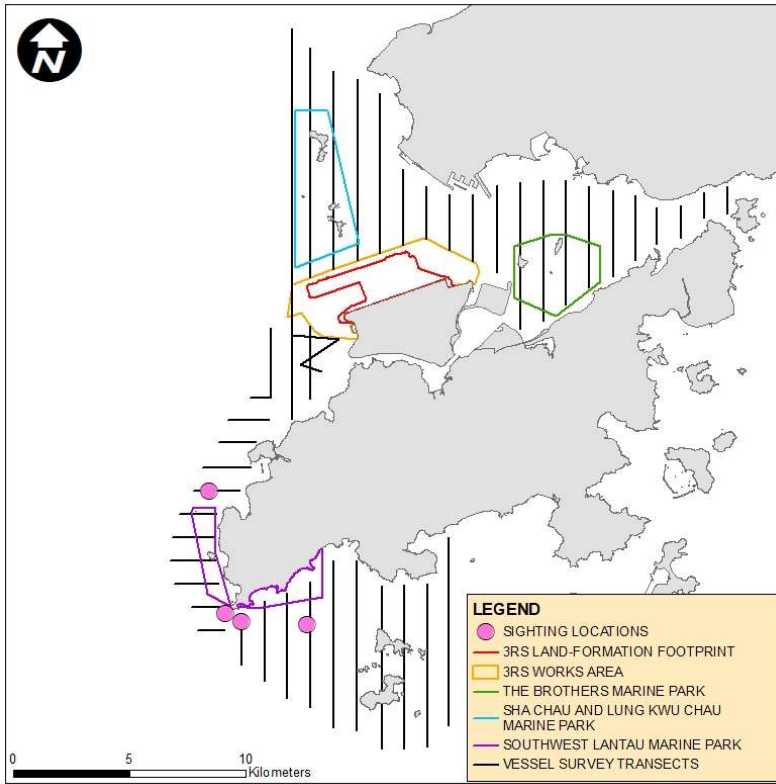
SLMM022



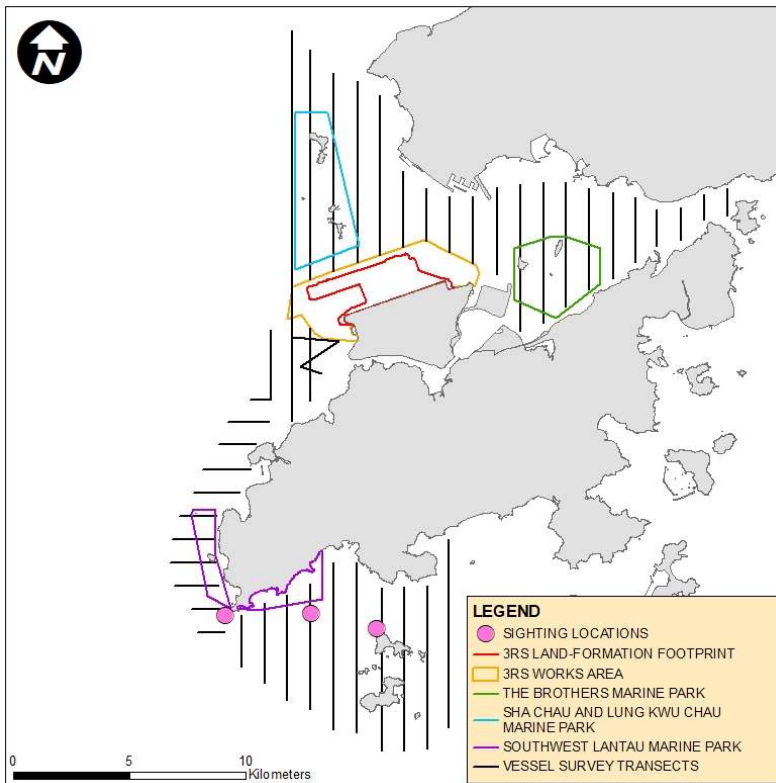
SLMM037



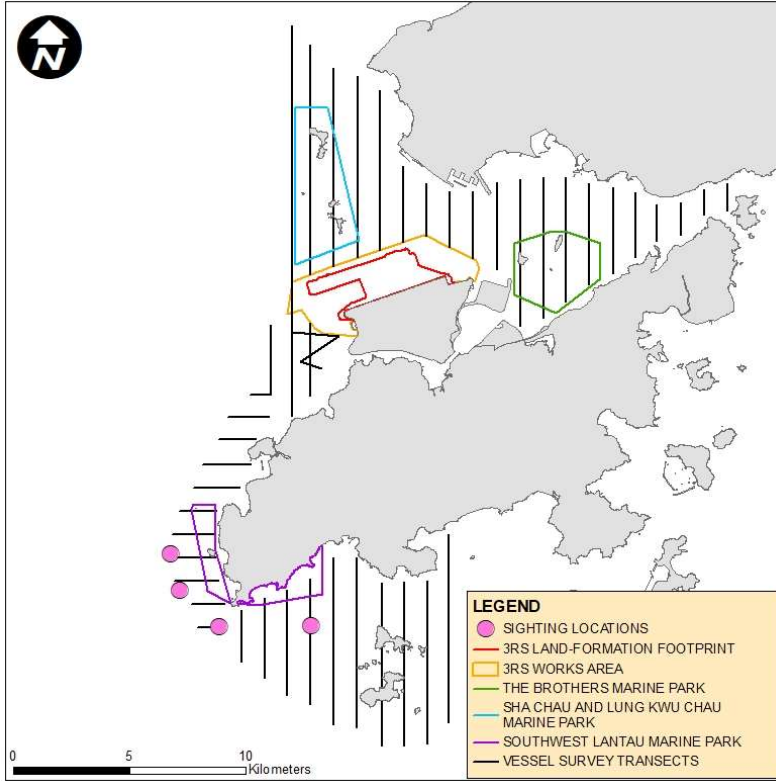
SLMM044



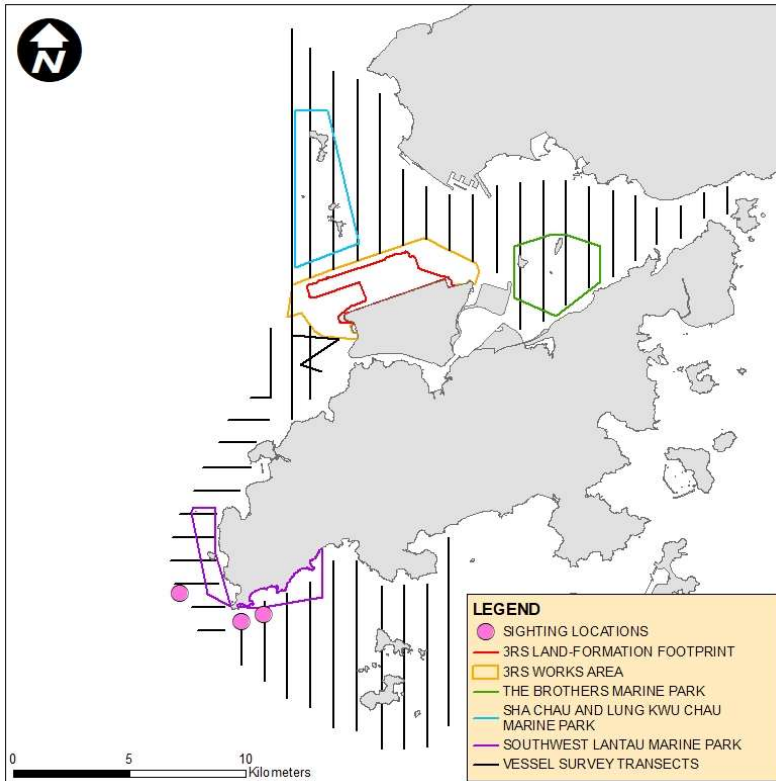
SLMM049



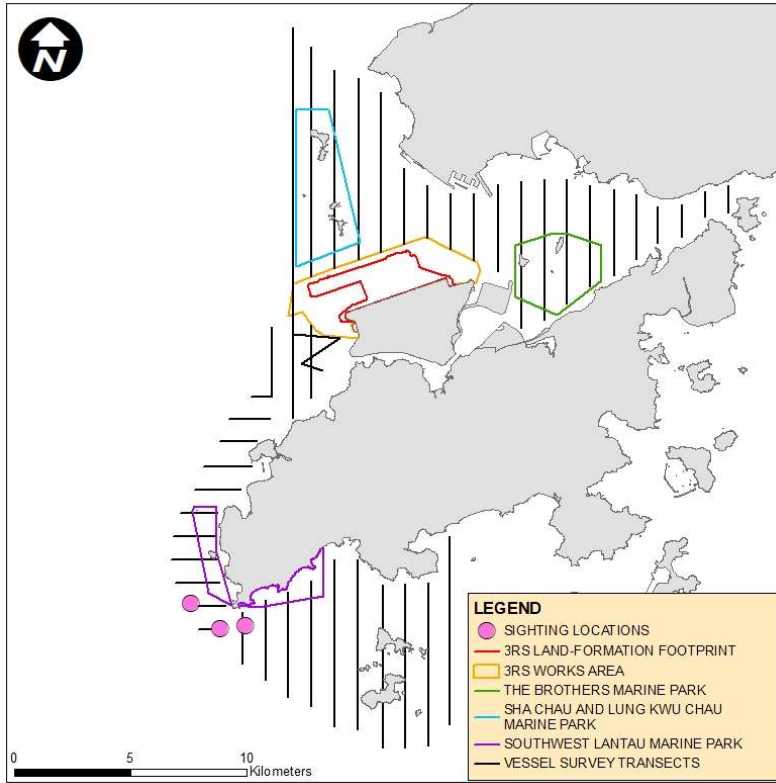
SLMM052



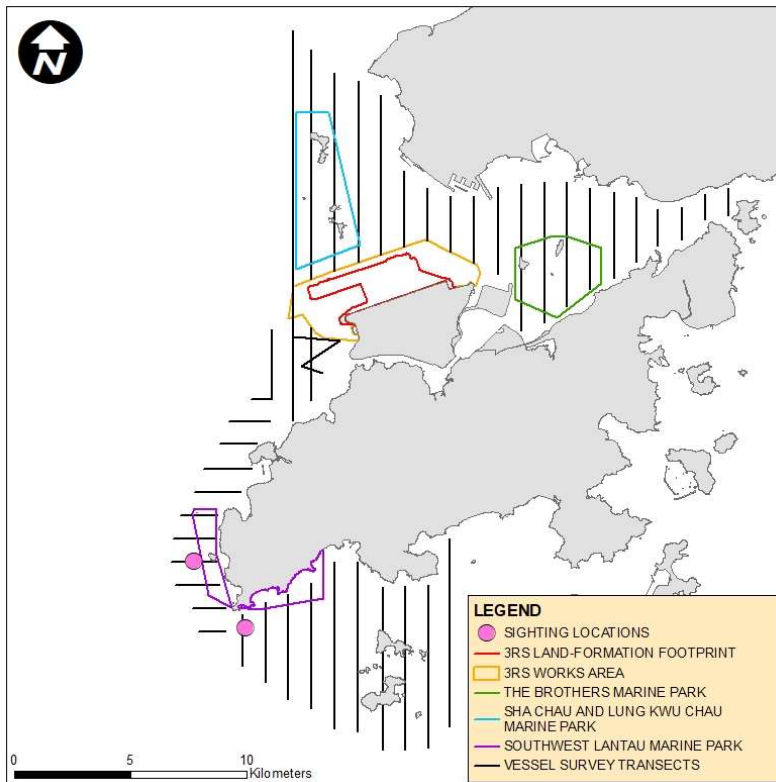
WLMM001



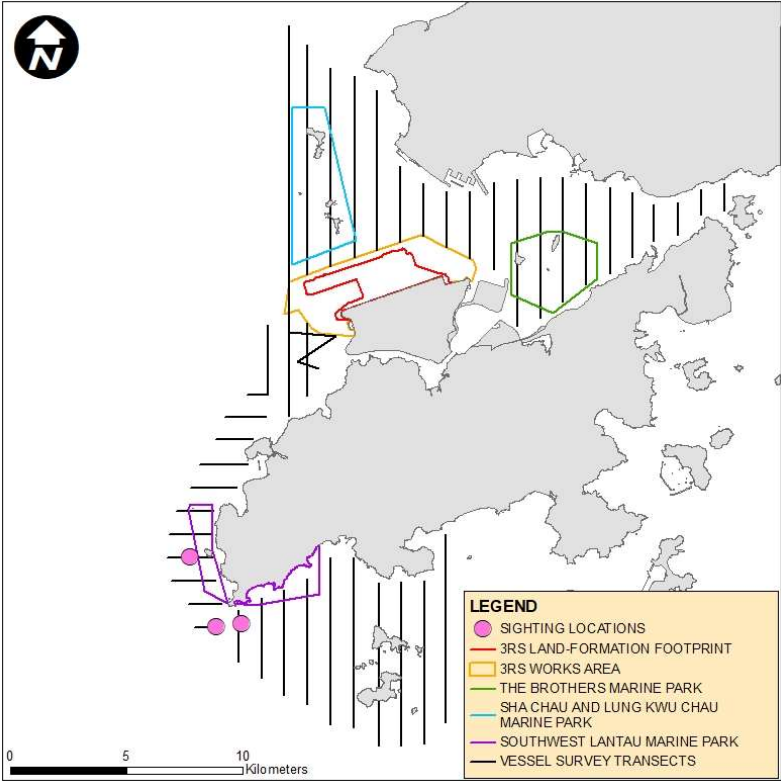
WLMM028



WLMM093



WLMM102



CWD Land-based Theodolite Tracking

CWD Groups by Survey Date

Date	Station	Start Time	End Time	Duration	Beaufort Range	Visibility	No. of Focal Follow Dolphin Groups Tracked	Dolphin Group Size Range
20/Jul/23	Lung Kwu Chau	08:42	14:42	6:00	2	1	1	1
21/Jul/23	Sha Chau	11:07	17:07	6:00	2-3	1	0	0
15/Aug/23	Lung Kwu Chau	8:49	14:49	6:00	2	1	1	1
23/Aug/23	Sha Chau	10:39	16:39	6:00	2	1	0	0
21/Sep/23	Lung Kwu Chau	8:59	14:59	6:00	1	1	0	0
26/Sep/23	Sha Chau	10:53	16:53	6:00	2-3	1	0	0

Visibility: 1=Excellent, 2=Good, 3=Fair, 4=Poor